

GEA302 Industrial Scan Engine

GEA302 is designed for precision and speed, featuring a red cross laser aiming that allows users to quickly and accurately target barcodes, reducing scanning time and improving workflow efficiency. This feature is especially valuable in retail, warehousing, and healthcare environments where speed and accuracy are critical. With an extended scanning range, the GEA302 supports a wide spectrum of barcode types and distances, making it highly adaptable to various operational scenarios. Whether you're scanning small codes on product packaging or distant codes on warehouse shelves, GEA302 delivers consistent performance. Powered by a 600mAh battery, it offers an impressive 21 hours of continuous use, ensuring reliable operation during long shifts.

MAIN FEATURES

- Global Shutter
- White LED Illumination
- Red Cross Laser Aiming
- Low Power Consumption
- Excellent Scanning Range



PERFORMANCE CHARACTERISTICS

Optical Resolution	1280*800 pixels
Shutter	Global Shutter
Illumination	White LED
Aiming	Red Cross Laser
Readability	3.3mil
Field of View	Horizontal 39°, Virtual 26°
Screw, Pitch, Roll	Skew tolerance: $\pm 60^\circ$ from normal Pitch tolerance: $\pm 60^\circ$ from normal Roll tolerance: 360° from normal
Supported Symbolologies	1D: Code128, Code39, Code32, Code39 full ASCII, Trioptic Code39, Code93, UPC-A, UPC-E, UPC-E1, UPC-E+, UPC-A+, EAN8/JAN8, EAN13/JAN13, Bookland EAN/ISBN, Interleaved 2 of 5, Matrix 2 of 5, Industrial 2 of 5, Chinese 2 of 5, Codebar, Code11, MSI, ISBT, GS1 128, GS1 Databar14, GS1 Databar Limited, GS1 Databar Expanded, Postal Code 2D: QR Code, DataMatrix, PDF417, Micro QR Code, Micro PDF417, Hanxin Code, GridMatrix, Aztec, Maxicode, GS1 QR Code, GS1 DataMatrix, GS1 Combosite(CC-A/CC-B/CC-C)

PHYSICAL PARAMETER

Dimension	21.5 x 7 x 10.5mm
Operation Voltage	3.2 - 3.6V
Operation Current	280mA
Standby Current	40mA(USB), 45mA(USB off)
Communication Interfaces	UART 3.3V, USB HID, USB Virtual Com Port

USER ENVIRONMENT

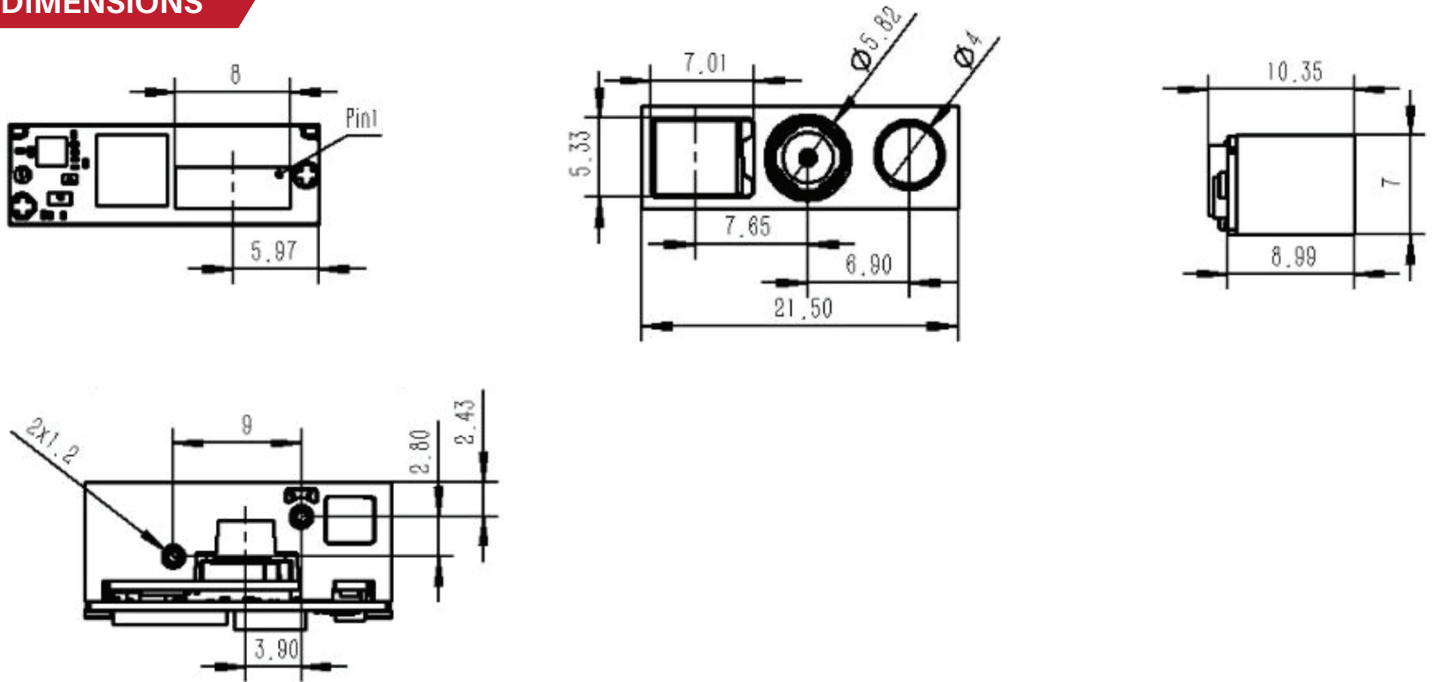
Ambient Light	0 - 100,000 Lux.
Operating Temperature	-20°C~65°C
Storage Temperature	-40°C~70°C
Humidity	5%~95% non-condensing

DECODE RANGE

3.3mil Code39	100 - 200MM
5mil Code39	70 - 320MM
6.7mil PDF417	95 - 270MM
10mil Data Matrix	80 - 280MM
13mil EAN-13	50 - 720MM
15mil QR Code	30 - 400MM

PRODUCT SPEC SHEET

Industrial Scan Engine GEA302

DIMENSIONS

The specific signal definitions for the 12-pin FPC are as follows:

PIN	Definition	I/O	Description
1	NC	-	Floating
2	VCC	I	Power input - 3.2 - 3.6V
3	GND	-	Power Ground
4	RX	I	TTL level receive
5	TX	O	TTL level transmit
6	D-	O	USB_D-
7	D+	-	USB_D+
8	NC	-	Floating
9	Buzz	O, od	Buzzer output
10	LED	O, od	Light indicator output of decoding successful
11	NC	-	Floating
12	nTRIG	I	Trigger key input

GENERALSCAN

+1 732 391 7747 ©

+90 542 478 5873 ☎

+1 732 391 7747

sales@generalscan.cloud ☒

Generalscan Inc.

Generalscan LLC

Generalscan Electronics GmbH