

WT1521 Wearable Armband Glove Scanner



Plug-and-Play, No Bluetooth Pairing Process

The Type-C cable secures a dependable and steady link between the scanner and your mobile device, reducing the chances of data interruptions or connectivity glitches. Featuring a reversible plug setup, the Type-C connector streamlines the insertion procedure, ensuring effortless connections and enabling high-speed data transfers for quick and effective communication.

Comfortable Wear Guaranteed with Lightweight and Breathable Glove Materials

Utilizing lightweight and breathable materials and an ergonomic design, the MKIII glove guarantees lasting comfort even during extended daily wear, effectively minimizing user fatigue and enhancing overall comfort levels.

Three Kinds of Armbands for Diverse Work Environments

There are three types of armbands available for purchase, each with unique features and styles to meet different preferences and needs. Whether you're using them in a heavy-duty warehouse, a well-organized production line, or a bustling retail operation, there's one for you, and each one is customized just for you.

Rotating Armbands - Enable Viewing in Landscape and Portrait Modes

Equipped with a 360° rotatable mechanism, these armbands offer users the convenience of effortlessly switching their mobile devices between landscape and portrait orientations. This flexibility empowers users to tailor their viewing experience to suit their tasks, content, or individual preferences. Whether opting for a wider display in landscape mode or a more ergonomic setup in portrait mode, users can easily customize their viewing orientation for enhanced comfort and usability.

PRODUCT SPECIFICATION

Wearable Armband Glove Scanner WT R1521

ARM BAND PARAMETER

Armband Type	AB1800, AB2000, AB2200
Strap Length	Adjustable, 27cm and 38cm are available for AB2200
Armband Direction	360° rotatable
Applicable Screen Size	AB1800 for terminals with 4.0-6.5 inch screens AB2000 is suitable for screens of any size AB2200 for terminals with 4.7-7.2 inch screens
Armband Material	AB1800 - Silicone, PU, Webbing AB2000 - ABS, PU, Polyester AB2200 - PC, ABS, Webbing

INTERFACE

USB Interface	USB Type-C
Coiled Cable	Both ends Type-C connector, 165mm
USB Protocol	USB HID Keyboard, USB VCP (Virtual Serial Port)
Multilingual Keyboards	USB HID mode supports multilingual keyboards

USER ENVIRONMENT

Ambient Light	Max 100000lux (direct sunlight)
Operating Temperature	-10°C~50°C
Storage Temperature	-10°C~50°C
Humidity	5% - 85% non-condensing
Drop Spec.	Multiple 4.9ft./1.5M drops to concrete
Tumble Spec.	Scanner body withstands 20,000 times from 3.3ft./1M with frequency of 10 times per minute.
Electrostatic	±8kv DC discharge, ±15kv air discharge
Discharge (ESD)	
Certificates	RoHS, NOM, EAC

SCANNER PHYSICAL PARAMETER

Dimensions	66.54mm(L) × 34.73mm(W) × 25.16mm(D)
Weight	25.8g(Scanner body)
Notification	LED, Buzzer, Vibration

PERFORMANCE CHARACTERISTICS

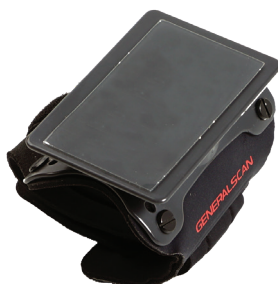
Optical Resolution	640×480 pixels
Shutter	Global Shutter
Sensor	2D CMOS Image
Skew, Pitch & Roll	Skew tolerance: ±55° from normal Pitch tolerance: ±55° from normal Roll tolerance: 360° from normal
Illumination	White LED
Aiming	Red LED
Supported	1D: Code 128(ISBT 128, AIM 128, GS1 128) , EAN-13, EAN-8,
Symbologies	UPC-E, UPC-A, ISBN, ISSN, Code11, Interleaved 2 of 5, Code39, Code93, Code32, Codabar, Matrix 2 of 5, Industrial 25, IATA25, MSI Plessey, GS1 DataBar, Plessey, Febraban 2D: QR Code, Micro QR, Data Matrix, PDF417, Micro PDF417, Aztec, Maxicode, Han Xin Code, Dotcode, Composite

DECODE RANGES

13 mil EAN-13	50.0 - 325.0MM
5 mil Code 39	55.0 - 135.0MM
13 mil Code128	50.0 - 330.0MM
15 mil QR	30.0 - 190.0MM
10milData Matrix	40.0 - 130.0MM
6.67 mil PDF417	50.0 - 135.0MM



AB1800



AB2000



AB2200

GENERALSCAN

Generalscan Inc.

200 Buckelew Ave, Jamesburg,
NJ 08831, USA
+1 732 895 6821

Generalscan Electronics GmbH

Hochstraße 42, 52525
Heinsberg Germany
+49 1516 7161256

Generalscan LLC

Calle San Luis Potosi 51,
Roma Norte 06700,
Ciudad de México
+52 5552727861

GENERALSCAN ELEKTRONIK VE TEKNOLOJİ SAN. VE TİC. LTD. ŞTİ.

FSM Mah. Siir Sk. Relux Plaza No 10,
Ümraniye 34764,
İstanbul, Turkey
+90 542 478 5873